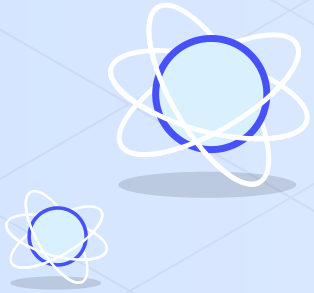
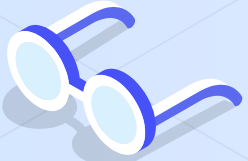
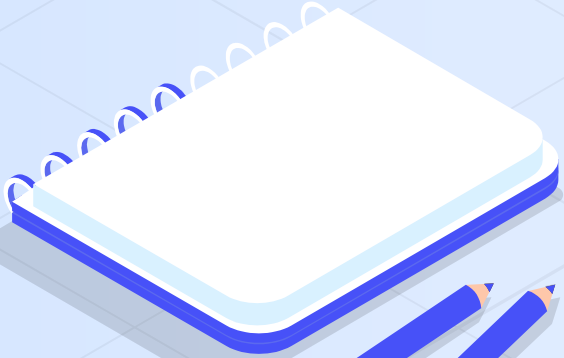
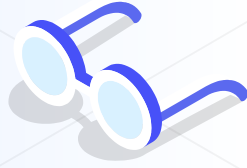


What is a science enquiry?



**What are the
different types
of science
enquiries?**





Types of Science Enquiry



**Comparative /
Fair Testing**



Pattern Seeking



Research



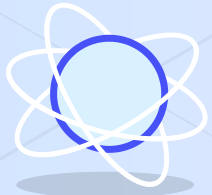
**Identifying, Grouping
and Classifying**



**Observation over
Time**



Problem Solving





SCIENCE FAIR

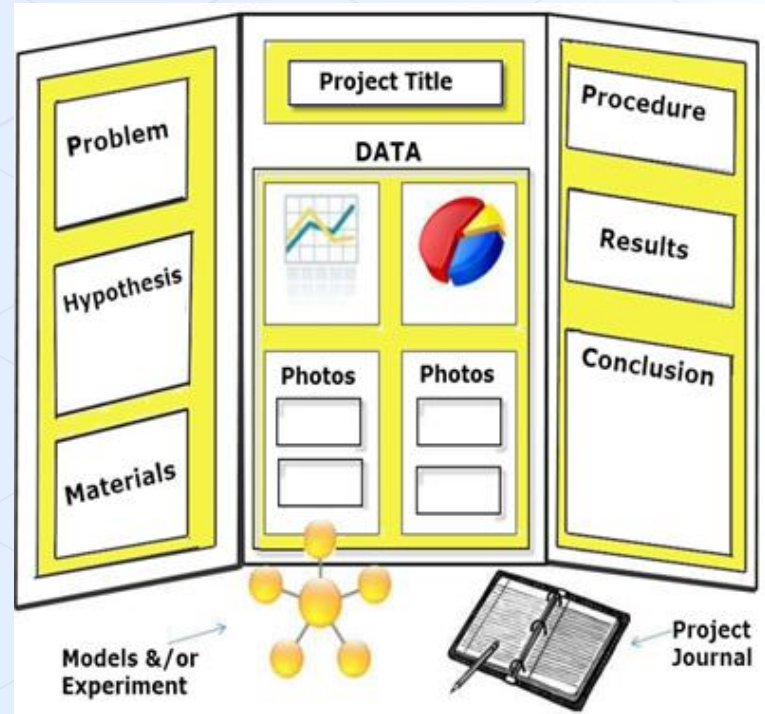
Return by: Wednesday 15th March 2023

Science Fair: Thursday 16th March 2023

How to Join



You complete a science enquiry to answer a question or a problem you are interested in. You then need to make a display presenting your findings.



The Fair



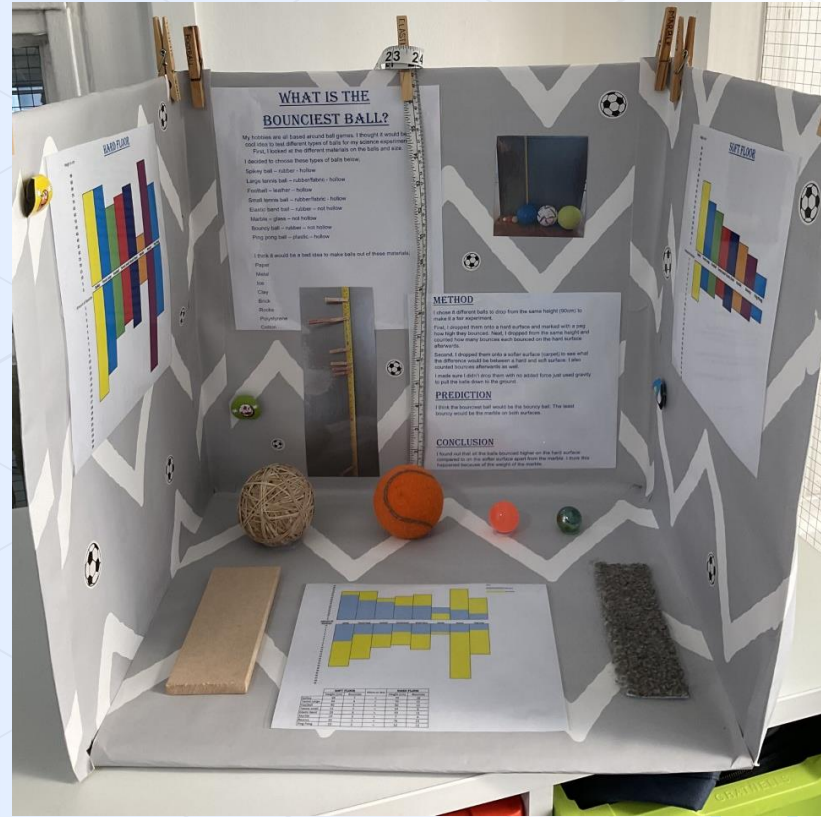
Everyone who does a science project at home will receive a certificate and 50 teampoints!

Every class will be given the chance to view your project on display in the hall on Thursday 16th March.

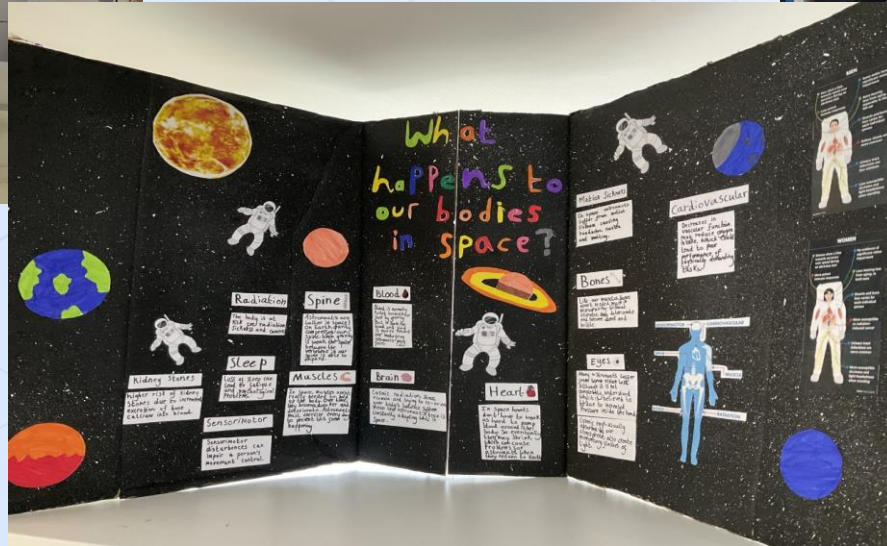
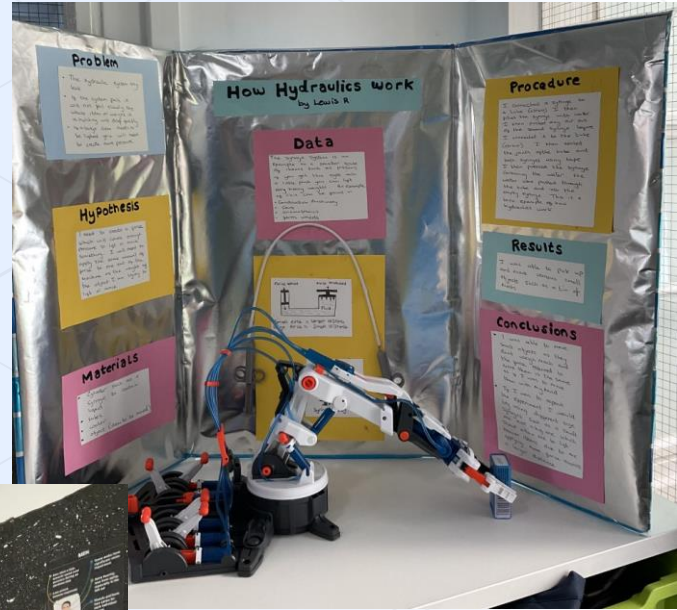
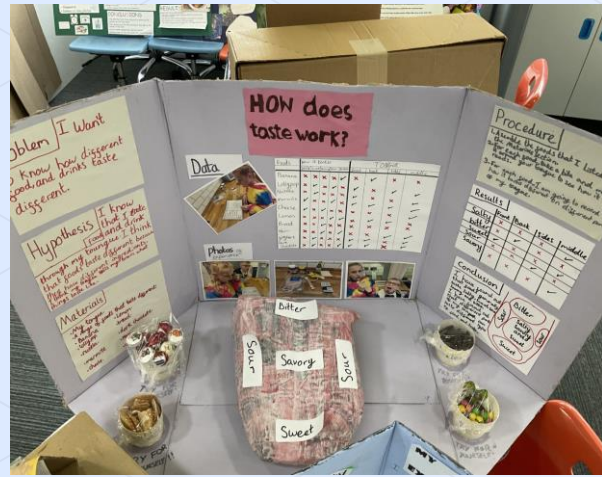
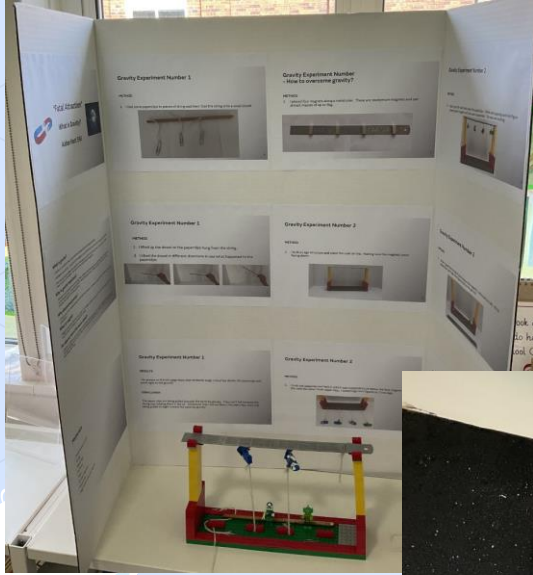
Your projects will be pictures and shared with other schools in the Trust.



Examples



Examples



So, over the next few weeks, think of a question – something you'd really like to find out – and decide how to carry out an investigation to answer your question.

Examples Questions

- Why is the sky blue?
- Which material is the best insulator?
- Which brand of kitchen roll is the most absorbent?
- How are sugar crystals formed?
- What is the most common flower found in the park?
- How does forensic science work?

